

RUTGERS PROGRAMS FOR THE COMMUNITY



RUTGERS
NEW BRUNSWICK



RUTGERS PROGRAMS FOR THE COMMUNITY



RUTGERS
NEW BRUNSWICK



Contents

Page 1: Welcome

Page 2: Ways to Engage with Rutgers

Page 4: Rutgers Supports Its Neighbors

Page 8: Program Descriptions A–Z

Page 43: Program Index by Interest Area

Page 47: Program Index A–Z

WELCOME

At Rutgers, we are committed to reaching beyond our campus borders to educate, inform, and assist local communities.

As members of the greater New Brunswick community, we are dedicated to its vibrancy and growth. Rutgers' partnerships with residents, organizations, health institutions, and businesses put our resources to work throughout the area.

Use this directory to learn about university programs available to you and ways to engage with Rutgers. From swim lessons and professional education to gardening and the arts, your state university has a program for you.

Visit communityprograms.rutgers.edu to discover the latest events and opportunities, or contact us at 732-932-7824 for more information.

We look forward to hearing from you!



Linda Bassett
*Senior Director,
Office of Community Affairs*



Melissa Selesky
*Director, Rutgers-New Brunswick
Community Relations*

Ways to Engage with Rutgers



Take advantage of Rutgers' strengths and expertise in the following areas:

Business Outreach: Local businesses—from corner stores to large corporations—depend on Rutgers for technical assistance and innovative solutions.

Education Outreach: Learn for life with preschool programs, college prep support, professional education, and courses for senior citizens.

Employment Services: Climb the ladder with career fairs, continuing and professional education, workforce forecasting, and more.

Student Volunteerism: Students devote their time and talents to serve community members and organizations in need.

Faculty Expertise: With experts in every discipline, Rutgers' faculty participate in research partnerships, speaking engagements, and more.

Cultural Programs: Take in museum exhibits, theater performances, musical acts, public lectures, and cultural festivals.

Health and Safety: Learn about nutrition and child safety through scores of public programs.

Environmental Awareness: Consult with university eco-experts on recycling and purchasing to benefit your business and the environment.



Rutgers Gardens Children's Programs (page 32) include a weeklong summer adventure into ecological science on 180 acres of idyllic landscapes. Through projects, games, and hands-on activities, campers aged 9 to 13 learn to identify plants and insects, explore outdoor environments, understand gardening basics, and much more.

Rutgers Supports Its Neighbors



It all adds up: Rutgers is a major contributor to the greater New Brunswick economy. Our impact starts with dollars spent and funds invested, but it hardly ends there. Rutgers shares many valuable assets—from manpower hours to infrastructure improvements—with its host communities. Here are some of the ways that Rutgers' presence helps to strengthen the economy in Middlesex County.

Supporting Local Business

The 39,000-plus students attending Rutgers–New Brunswick study, play, and live locally, shopping in corner stores and snacking in coffee bars. They buy supplies downtown and bring family and friends to local restaurants. With each student spending an average of \$8,642 each year, this translates to a hefty total spending of about \$337 million in our local economy.

Add to that a daily influx of over 10,000 potential customers: Rutgers' faculty and staff. Our employees grab sandwiches for lunch, run errands in town, and meet colleagues for dinner after work. University activities—like academic conferences, faculty meetings, and special events—translate to significant revenue streams for local hotels, restaurants, conference centers, and catering firms.

Through athletic contests, cultural events, and academic conferences, Rutgers attracts more than 855,000 visitors each year who infuse an estimated \$13 million into the local economy.

Purchasing Locally

Not only is Rutgers committed to purchasing locally, we make it a priority to support small businesses and women- and minority-owned businesses. In fact, in the period from January 2009 to September 2010 alone, Rutgers spent:

- \$125.3 million in goods and services within Middlesex County
- \$39 million in purchases from about 300 unique vendors in New Brunswick
- \$37.9 million with small businesses of 50 or fewer employees
- \$20 million with 200 unique vendors in Piscataway

Partnering with Public Services

Rutgers is New Brunswick's public services partner, sharing resources to help foster a safe and secure community. Here's a quick look at our contributions:

Police and Emergency Services: Campus emergency services—police, fire, and ambulance—aid local colleagues as needed. They also provide training programs and share intelligence, equipment, and personnel.

Environmental Health and Safety: Rutgers disseminates public information, advises local governments, conducts educational programs and training exercises, and provides local disaster response and instruction.

Transportation: Campus buses provide free transit to approximately 500 residents each day.





Emergency Management: Public emergencies—from severe weather to hazardous materials to terrorist threats—require coordination among Rutgers and our municipal and county counterparts. We assist in risk assessment, provide emergency action plans, and conduct training exercises, among many other efforts.

Building for the Future

Rutgers–New Brunswick’s downtown building program demonstrates our commitment to more fully integrate university life with city life. Infrastructure improvements spur short-term spending while providing a foundation for long-term economic growth. Rutgers’ completed and planned major construction projects boost our host cities’ economies through:

- Jobs for contractors, construction workers, architects, engineers, and others
- Construction-related purchasing, from meals to materials
- Retail space that generates tax revenue and improves the downtown shopping district
- Employment for local residents in retail stores and other enterprises
- An infusion of Rutgers faculty, staff, and students into an invigorated city center

Working with the City of New Brunswick, the New Brunswick Development Corporation (DEVCO), and other partners, Rutgers has invested in several recent capital construction projects, including:

- Civic Square, a multiuse complex on the corner of Livingston Avenue and New Street that puts two Rutgers schools—Edward J. Bloustein School of Planning and Public Policy and Mason Gross School of the Arts—at the city’s crossroads
- Health Sciences Center, including the College of Nursing building and the Institute for Health Sciences, an academic facility located between Paterson and Bayard streets providing a bricks-and-mortar foundation for health care partnerships with the city
- Gateway Transit Village, a mixed-use facility connecting College Avenue to the New Brunswick train station, featuring a new university bookstore, parking garage, office space, residential rental units, and for-sale condominium homes
- Heldrich Plaza, a 365,000-square-foot hotel anchor project on Livingston Avenue that includes the John J. Heldrich Center for Workforce Development
- Rockoff Hall, a 12-story retail and student residential high-rise on George Street
- Rutgers Public Safety building, a 75,000-square-foot facility that expands Rutgers’ presence along the George Street corridor
- University Center at Easton Avenue, a 12-story, 562,000-square-foot, mixed-use complex that includes apartment-style dormitory housing, structured parking, the Rutgers Fitness Center, and street-level retail space



Program Descriptions A–Z

This section includes Rutgers resources, events, and opportunities available to you. To browse by interest areas such as nutrition, youth camps, and the arts, visit page 43. For an alphabetical index of programs, see page 47. Take a look—our doors are open!

The Academy at Rutgers for Girls in Engineering and Technology (TARGET)

TARGET is a weeklong summer program designed for middle and high school girls. Through a series of hands-on activities, team challenges, speakers, and mentorships, TARGET aims to familiarize girls with different engineering disciplines and destroy negative stereotypes concerning their ability to do well in math and science.

Area(s) Served: New Brunswick; surrounding communities; New Jersey

Population(s) Served: Girls in grades six through 11

Partner(s): Motorola; National Science Foundation

For More Information

Website: osd.rutgers.edu/target

Contact: Candiece White,
cawhite@rci.rutgers.edu

Program Administration

School of Engineering
98 Brett Road
Piscataway, NJ 08854
732-445-2687, ext. 18

The Academy for Leadership and Equity (TALE)

TALE is designed for seventh- and eighth-grade students interested in leadership roles and exploring nontraditional careers, those in which one gender comprises less than 25 percent of those employed. Participants make a difference in their schools by developing and implementing a social awareness project to be shared with their peers.

Area(s) Served: New Brunswick; surrounding communities; New Jersey

Population(s) Served: Students in grades seven and eight

Partner(s): New Jersey Department of Education

For More Information

Website: ncrc.rutgers.edu/do/tale.html

Contact: Glenda Gracia-Rivera,
ncrc@rci.rutgers.edu

Program Administration

Nontraditional Career Resource Center
Center for Women and Work
50 Labor Center Way
New Brunswick, NJ 08901
732-932-0054



The Academy at Rutgers for Girls in Engineering and Technology (TARGET) (page 8) is a summer program designed to encourage young women to flex their scientific muscles in the area of engineering. With activities like building and launching rockets, labs, and workshops, girls in grades six through 11 get a strong introduction to a range of engineering disciplines.

Advancement Via Individual Determination (AVID)

AVID helps prepare students for entry into four-year undergraduate institutions by increasing their level of academic performance. Rutgers undergraduate students serve as supplemental instructors in the areas of math, English, and science. Sessions are held twice per week at New Brunswick High School for approximately 20 weeks during the academic year.

Area(s) Served: New Brunswick High School

Population(s) Served: Students in the middle of their academic class with B/C grade-point averages

Partner(s): New Brunswick Public Schools

For More Information

Website: odasis.rutgers.edu/index.php/avid

Contact: Nina Echeverria,
echeverria@biology.rutgers.edu; Ruth Yeselson,
ruth_yeselson@nbps.k12.nj.us

Program Administration

Office for Diversity and Academic Success
in the Sciences
604 Allison Road
Piscataway, NJ 08854-8000
732-445-6878

Annual Safety Forum

The Annual Safety Forum is a proactive and educational networking event for transportation, enforcement, and educational agencies, industry, and professional organizations.

Area(s) Served: New Brunswick; Piscataway; New Jersey

Population(s) Served: Safety-related agencies and organizations

Partner(s): Federal Highway Administration; New Jersey Department of Transportation; Transportation Safety Resource Center

For More Information

Website: cait.rutgers.edu/tsrc/forum2

Contact: Janet Hansen, jchansen@rci.rutgers.edu

Program Administration

Transportation Safety Resource Center
Center for Advanced Infrastructure and
Transportation (CAIT)
100 Brett Road
Piscataway, NJ 08854-8058
732-445-3919, ext. 146

Ask Before You Eat (Food Allergy Awareness Campaign)

Making New Jersey's residents aware of the dangers of food allergies, Ask Before You Eat helps people understand the importance of avoiding foods that trigger allergic reactions. Restaurants can obtain fact sheets and advice on how to serve enjoyable and safe meals to customers with food allergies.

Area(s) Served: New Brunswick; New Jersey

Population(s) Served: Restaurants; New Jersey residents

Partner(s): New Jersey Department of Health and Senior Services; New Jersey Restaurant Association

For More Information

Website: foodallergy.rutgers.edu

Contact: foodallergy@njaes.rutgers.edu

Program Administration

Department of Nutritional Sciences
School of Environmental and Biological Sciences
26 Nichol Avenue
New Brunswick, NJ 08901-2882

Big Chill 5K Run/Walk (Charity Toy Drive)

In lieu of a race fee, participants are asked to bring a new, unwrapped toy for a child between the ages of 3 and 14. Suggestions include dolls, books, sports equipment, games, and building blocks.

Area(s) Served: New Brunswick; surrounding communities

Population(s) Served: Children ages 3 to 14; local charitable organizations

Partner(s): Catholic Charities; Children's Specialized Hospital; New Brunswick Housing Authority; New Brunswick Recreation Department; The Salvation Army

For More Information

Website: bigchill.rutgers.edu/welcome.html

Contact: bigchill@rci.rutgers.edu

Program Administration

Department of Recreation
Werblin Recreation Center
656 Bartholomew Road
Piscataway, NJ 08854
732-445-0462



Big Pink Volleyball

Big Pink Volleyball is a fun and competitive tournament played in over 20 universities nationwide. Rutgers students donate money to create a team to enter in the tournament, and sell Big Pink Volleyball merchandise. All donations go to the Central New Jersey Affiliate of Susan G. Komen for the Cure.

Area(s) Served: New Brunswick; Piscataway; surrounding communities; New Jersey

Partner(s): Central New Jersey Affiliate, Susan G. Komen for the Cure

For More Information

Contact: Matthew S. Zielinski,
mattzie@rci.rutgers.edu

Program Administration

Residence Life and Recreation
Federation Hall, 4 Jones Avenue
New Brunswick, NJ 08901
732-932-4075

Bridge to Employment (BTE)

BTE seeks to increase the number of students pursuing careers in health care, science, technology, engineering, and mathematics. Throughout high school, students receive three hours of academic support on Saturdays during the school year. In addition, the students engage in college experiences, mentoring programs, research projects, and workshops.

Area(s) Served: New Brunswick

Population(s) Served: Students in grades nine through 12 attending New Brunswick High School or New Brunswick Health Sciences Technology High School

Partner(s): Johnson & Johnson; New Brunswick Public Schools

For More Information

Website: odasis.rutgers.edu/index.php/bridge-to-employment

Contact: Kamal Khan, khan@biology.rutgers.edu

Program Administration

Office for Diversity and Academic Success
in the Sciences
604 Allison Road
Piscataway, NJ 08854-8000
732-445-6878

Cardiopulmonary Resuscitation (CPR) and First Aid Training

The Emergency Services Training unit of the Rutgers Division of Public Safety provides CPR and first aid courses to the community at large through the American Heart Association Community Training Center. The department also provides instructor training and support for various municipal governments.

Area(s) Served: New Brunswick; Piscataway; surrounding communities; New Jersey

Population(s) Served: All

Partner(s): American Heart Association

For More Information

Website: rues.rutgers.edu/cpr.shtml

Contact: Lieutenant Les Barta,
lbarta@aps.rutgers.edu

Program Administration

Department of Emergency Services
55 Commercial Avenue
New Brunswick, NJ 08901
732-932-4800

Career Summer Institute (CSI)

CSI is a free, weeklong residential program designed for high school students who completed ninth, 10th, or 11th grades. This intensive program focuses on two key stages of career development: career assessment and career exploration. Activities include interactive workshops, exploration of careers and nontraditional workplaces, and leadership skill building.

Area(s) Served: New Brunswick; Piscataway; New Jersey

Population(s) Served: High school students in grades 10 through 12

Partner(s): New Jersey Department of Education

For More Information

Website: nrcr.rutgers.edu/do/career-institute.html

Contact: Glenda Gracia-Rivera,
nrcr@rci.rutgers.edu

Program Administration

Nontraditional Career Resource Center
Center for Women and Work
50 Labor Center Way
New Brunswick, NJ 08901
732-932-0054

Center for Effective School Practices (CESP)

Hosted by Rutgers' Graduate School of Education, CESP is a multidimensional school improvement organization providing high-quality technical assistance, professional development, coaching, and other support services to practitioners and scholars. Workshops cover a wide range of instructional strategies for educators teaching at all grade levels.

Area(s) Served: New Brunswick; Piscataway; New Jersey

Population(s) Served: Prekindergarten to grade 12 teachers, administrators, supervisors, and other specialists; students; parents; researchers

Partner(s): New Jersey Department of Education; traditional and charter public schools; statewide education associations

For More Information

Website: cesp.rutgers.edu

Contact: Liliana Snegur, lsnegur@rci.rutgers.edu

Program Administration

Center for Effective School Practices
80 Cottontail Lane, Suite 410
Somerset, NJ 08873
732-564-9100

Child Seat Inspection Station

Certified technicians assist in ensuring child safety seats are properly installed. The inspection station, located at 129 Davidson Road in Piscataway, New Jersey, is open Wednesdays, 7–11 a.m.; Thursdays, 3–7 p.m.; and the first Saturday of every month, 8 a.m.–noon.

Area(s) Served: New Brunswick; Piscataway; New Jersey

Population(s) Served: Families with young children

Partner(s): New Jersey Division of Highway and Traffic Safety

For More Information

Website: publicsafety.rutgers.edu/rupd/programs.shtml

Contact: Community Policing Officer Jennifer Hammill, carseat@aps.rutgers.edu

Program Administration

Rutgers University Police Department
55 Commercial Avenue
New Brunswick, NJ 08901
732-932-1368

Civic Engagement and Service Education Partnerships (CESEP) Program

The CESEP Program identifies projects, provides orientations, and tracks the progress of Rutgers students who participate in service learning and community engagement projects. The Council of Community Partners from New Brunswick provides information about the kinds of projects in which Rutgers students can participate.

Area(s) Served: New Brunswick; surrounding communities

Population(s) Served: Varies with need

Partner(s): American Conference on Diversity; BOAZ Community Corporation; Community Development Institute; Head Start; Elijah's Promise; Embrace Kids Foundation; Eric B. Chandler Health Center; Farmer's Solidarity Project; Francis E. Parker Memorial Home; George Street Playhouse; H.O.P.E.; Italian American Heritage Commission; Lazos America Unida; Learning to End Hunger Campaign; Lord Stirling School; Marigold Project; New Brunswick Health Sciences Technology High School; New Brunswick Senior Citizen Resource Center; New Jersey Women and AIDS Network; NJPIRG Student Chapters; Robert Wood Johnson University Hospital; St. Peter's University Hospital; Sustainable Connections; U.S. Census Bureau; Youth Empowerment Service; Youth Services System

For More Information

Website: engage.rutgers.edu

Contact: civic@rci.rutgers.edu; Amy Michael, amymic@rci.rutgers.edu

Program Administration

Civic Engagement and Service Education
Partnerships Program
191 College Avenue
New Brunswick, NJ 08901
732-932-8660



Community Policing Program

The Community Policing Program assists the City of New Brunswick with walking patrols and formal public safety training. The community policing officers have completed advanced training in programs such as security design, communication effectiveness, and community involvement.

Area(s) Served: New Brunswick

Population(s) Served: Local residents

Partner(s): New Brunswick Police Department, City of New Brunswick

For More Information

Website: publicsafety.rutgers.edu/rupd/units.shtml

Contact: Sergeant Michael J. Rein,
mrein@aps.rutgers.edu

Program Administration

Rutgers University Police Department
55 Commercial Avenue
New Brunswick, NJ 08901
732-932-1368

Confucius Institute at Rutgers University (CIRU)

CIRU provides information about China and offers programs for achieving excellence in teaching and research in Chinese language and culture. CIRU also strives to enhance and expand university scholarship in Chinese studies. The institute supports the expansion and diversification of cooperation between the university, the state, and China and East Asia.

Area(s) Served: New Brunswick; Piscataway; New Jersey

Population(s) Served: Varies

Partner(s): Jilin University in China; Office of Chinese Language Council International (Hanban)

For More Information

Website: www.ciru.rutgers.edu

Contact: Holly Chen Tyson,
htyson@rci.rutgers.edu

Program Administration

Confucius Institute at Rutgers University
24 College Avenue
New Brunswick, NJ 08901-1164
732-932-2651

Day of the Dead Program

The Day of the Dead Program (November 1–2) features Mexican food traditions, artist workshops and performances, and exhibitions related to the Día de los Muertos celebration.

Area(s) Served: New Brunswick; surrounding communities; New Jersey

Population(s) Served: Local residents

Partner(s): Lazos America Unida; New Brunswick Free Public Library

For More Information

Website: clac.rutgers.edu/community

Contact: Sandra Rocio Castro,
scastro@rci.rutgers.edu

Program Administration

Center for Latino Arts and Culture
122 College Avenue
New Brunswick, NJ 08901-1165
732-932-1263

Department of Transportation Services (DOTS)

Rutgers' campus transit service is available to all residents of and visitors to New Brunswick and Piscataway at no cost. Schedules are available on the Rutgers Department of Transportation Services website.

Area(s) Served: New Brunswick; Piscataway

Population(s) Served: Residents and visitors

Partner(s): City of New Brunswick; Middlesex County Transportation; New Brunswick Parking Authority

For More Information

Website: rudots.rutgers.edu

Contact: info@aps.rutgers.edu

Program Administration

Department of Transportation Services
55 Commercial Avenue
New Brunswick, NJ 08901
732-932-7744



Douglass Project: Fourth Grade Science Stars

This annual program engages Douglass Residential College undergraduates and students from local New Brunswick elementary schools in interactive, hands-on science labs based on New Jersey's fourth-grade human body curriculum. The goal of the program, which takes place on Friday mornings, is to excite and educate children about the field of science.

Area(s) Served: New Brunswick

Population(s) Served: Students in grade four

Partner(s): New Brunswick Public Schools

For More Information

Contact: Regina Riccioni,
reginar@echo.rutgers.edu; Ife Meadows
for student volunteer information,
imeadows@echo.rutgers.edu

Program Administration

Douglass Project for Rutgers Women in Math,
Science, and Engineering
50 Bishop Street
New Brunswick, NJ 08901
732-932-9197

Expanded Food and Nutrition Education Program (EFNEP)

EFNEP provides classes for youth, families, and adults with limited incomes to help them improve their eating behaviors and understand the importance of good nutrition.

Area(s) Served: New Brunswick; New Jersey

Population(s) Served: Limited-resource adults and families; preschool children; youth; pregnant women

Partner(s): USDA's National Institute of Food and Agriculture

For More Information

Website: njaes.rutgers.edu/efnep

Contact: Debrah Palmer,
dpalmer@njaes.rutgers.edu

Program Administration

New Jersey Agricultural Experiment
Station Cooperative Extension
88 Lipman Drive
New Brunswick, NJ 08901
732-932-9853

Get Moving–Get Healthy New Jersey

Get Moving–Get Healthy New Jersey improves the health of individuals, families, and communities by encouraging a healthy lifestyle, especially healthy eating and physical activity, through educational programs, a website, publications, and targeted marketing campaigns.

Area(s) Served: New Brunswick; New Jersey

Population(s) Served: Children; adults; senior citizens; communities

Partner(s): American Academy of Pediatrics, New Jersey; Bristol-Myers Squibb; New Jersey Academy of Family Physicians; New Jersey Department of Health and Senior Services

For More Information

Website: getmovinggethealthynj.rutgers.edu

Contact: Kathleen Morgan,
morgan@njaes.rutgers.edu;

Nurgul Fitzgerald, nfitzgerald@njaes.rutgers.edu

Program Administration

Department of Family and Community
Health Sciences

Rutgers New Jersey Agricultural Experiment
Station Cooperative Extension
88 Lipman Drive
New Brunswick, NJ 08901-8525
732-932-5000, ext. 604

Getting to Know Europe: Business Forums

The Center for European Studies hosts a series of industry-specific business forums to raise awareness in the New Jersey business community of the European Union (EU) and of the potential for stronger EU-New Jersey trade, investment, and research and development ties.

Area(s) Served: New Jersey

Population(s) Served: Businesses and business associations

Partner(s): Delegation of the European Union to the United States; European-American Chamber of Commerce New Jersey; John J. Heldrich Center for Workforce Development; New Jersey Business Action Center

For More Information

Website: europe.rutgers.edu

Contact: gtke@europe.rutgers.edu

Program Administration

Center for European Studies
School of Arts and Sciences
102 Nichol Avenue
New Brunswick, NJ 08901
732-932-8551

Getting to Know Europe: Euro Challenge

The Euro Challenge trains a team of Rutgers undergraduate students in European Union politics and economics. They then recruit and train New Jersey high school teams to participate in the national Euro Challenge Competition, in which they compete to demonstrate their knowledge of the European Union and the euro currency.

Area(s) Served: New Jersey

Population(s) Served: High school students

Partner(s): Delegation of the European Union to the United States; Working in Support of Education (WISE)

For More Information

Website: europe.rutgers.edu

Contact: gtke@europe.rutgers.edu

Program Administration

Center for European Studies
School of Arts and Sciences
102 Nichol Avenue
New Brunswick, NJ 08901
732-932-8551



Not sure if you installed that seat correctly? Visit the Child Seat Inspection Station (page 13) on the Busch Campus at Rutgers University. Certified technicians from the Rutgers University Police Department are on hand to evaluate your car seat to ensure that it is safe and secure.

Governor's School of Engineering and Technology

The Governor's School of Engineering and Technology is a free residential program that brings together some of New Jersey's most talented and motivated high school students. Following their junior year of study, students spend part of the summer at the Rutgers School of Engineering to participate in team-based courses and research projects.

Area(s) Served: New Brunswick; surrounding communities; New Jersey

Population(s) Served: High school students in grade 11

Partner(s): Lockheed Martin; Morgan Stanley; SilverLine Windows, an Andersen Company

For More Information

Website: soe.rutgers.edu/gset

Contact: Jean Patrick Antoine,
j.antoine@rutgers.edu

Program Administration

School of Engineering
95 Brett Road
Room B-110
Piscataway, NJ 08854
732-445-2687, ext. 16

Halloween Monster Mash

The Halloween Monster Mash provides an alternative trick-or-treating experience for local elementary school children. Student organizations set up activity tables and reward visitors' efforts with treats. Activities include pumpkin painting, crafts, a costume contest, and relay races. In the past, approximately 700 families participated in the event.

Area(s) Served: New Brunswick; Piscataway; Highland Park

Population(s) Served: Elementary school children and families

Partner(s): Cook/Douglass Residence Life; Cook/Douglass Residential Campus Council, Rutgers Residence Hall Association; local public schools

For More Information

Contact: Reggie Blockett,
blockett@rci.rutgers.edu

Program Administration

Housing and Residence Life
Administrative Services Building III
3 Rutgers Plaza
New Brunswick, NJ 08901
732-932-9363

Healing Through the Arts Summer Camp

Healing Through the Arts Summer Camp encourages positive interaction between New Brunswick's economically disadvantaged Latino and African-American youth. By engaging youth in the creative process, they master multidisciplinary art skills, increase their understanding of respective cultures, strengthen their critical-thinking skills, and foster proficiency in performance through team-building, discussions, and art-making.

Area(s) Served: New Brunswick

Population(s) Served: Latino and African-American youth

Partner(s): New Brunswick Puerto Rican Action Board; Robert Wood Johnson University Hospital Health Promotion Program; Suydam Street Reformed Church

For More Information

Website: clac.rutgers.edu/community

Contact: Sandra Rocio Castro,
scastro@rci.rutgers.edu

Program Administration

Center for Latino Arts and Culture
122 College Avenue
New Brunswick, NJ 08901-1165
848-932-1263

HiGene: A Genome Sequencing Project for High Schools

The HiGene program helps high school teachers learn modern molecular genetics by engaging them in genuine scientific research projects during a summer workshop. When teachers return to their classrooms in September, they recruit students to begin working on the research project.

Area(s) Served: New Brunswick; surrounding communities; New Jersey

Population(s) Served: High school teachers

Partner(s): GE Healthcare Biosciences; National Science Foundation; Toshiba America Foundation

For More Information

Website: avery.rutgers.edu/WSSP/Begin

Contact: Susan Coletta,
coletta@waksman.rutgers.edu

Program Administration

Waksman Institute of Microbiology
190 Frelinghuysen Road
Piscataway, NJ 08854-8020
732-445-3531

Institute for Families (IFF)

IFF provides a focal point for training, research, and service activities concerned with strengthening families, promoting healthy family development, protecting children and strengthening families at risk, assisting youth in the transition to adulthood, supporting and protecting aging family members, and serving diverse populations of all ages.

Area(s) Served: New Brunswick; surrounding communities; New Jersey

Population(s) Served: Adults; children; families; senior citizens

Partner(s): A full list of partners is available on the website below.

For More Information

Website: socialwork.rutgers.edu/instituteforfamilies/aboutiff.aspx

Contact: John Klena, jcklena@ssw.rutgers.edu

Program Administration

School of Social Work
100 Joyce Kilmer Avenue
Piscataway, NJ 08854
743-445-0512

Law Enforcement Training Facility

The Rutgers University Police Department hosts a number of high-quality, industry standard training courses. The courses vary in topic and include internal affairs investigation overview, interview and interrogation techniques, and advanced supervision skills to improve the quality of police services delivered to the Rutgers community and the surrounding municipalities.

Area(s) Served: New Brunswick; Piscataway; surrounding communities; Middlesex County; New Jersey

Population(s) Served: New Jersey law enforcement

Partner(s): International Association of Chiefs of Police; John E. Reid & Associates; The Rodgers Group LLC; Van Meter & Associates

For More Information

Website: aps.rutgers.edu

Contact: Sergeant Michael J. Rein,
mrein@aps.rutgers.edu

Program Administration

Administration and Public Safety
55 Commercial Avenue
New Brunswick, NJ 08901
732-932-8407

Marigold Project

The Marigold Project promotes economic development, urban gardening, job training, and education while improving residents' health and the economic vitality of the neighborhood. The program also increases exposure to Rutgers and higher education for children of Mexican immigrants.

Area(s) Served: New Brunswick

Population(s) Served: Mexican community and Spanish-speaking immigrants

Partner(s): Clifford E. and Melda C. Snyder Research and Extension Farm; Department of 4-H Youth Development; Lazos America Unida; New Jersey Agricultural Experiment Station

For More Information

Website: njaes.rutgers.edu/spotlight/marigold.asp

Contact: Jim White, jwhite@sebs.rutgers.edu;
John Grande, grande@njaes.rutgers.edu

Program Administration

Department of Plant Biology and Pathology
School of Environmental and Biological Sciences
Foran Hall
59 Dudley Road
New Brunswick, NJ 08901
732-932-9711, ext. 357

Mason Gross School of the Arts Extension Division

The Mason Gross School of the Arts Extension Division provides high-quality arts instruction to students and adults of all ages and ability levels. Classes are available in dance, drawing, sculpture, and more. Summer classes and camps give young people an opportunity to explore their creative talents and hone their skills.

Area(s) Served: New Brunswick; Piscataway; New Jersey

Population(s) Served: Children; adults; teachers

Partner(s): Puerto Rican Action Board

For More Information

Website: masongross.rutgers.edu/extension

Contact: Julie Roth,
jroth@masongross.rutgers.edu;
extension@masongross.rutgers.edu

Program Administration

Mason Gross School of the Arts, Dean's Office
33 Livingston Avenue
New Brunswick, NJ 08901
732-932-8618

Math and Science Learning Center (MSLC)

MSLC is a unique resource for university and K–12 students. The center provides students with hands-on interdisciplinary science demonstrations and learning experiences taught by Rutgers faculty, staff, and students.

Area(s) Served: New Brunswick; surrounding communities; New Jersey

Population(s) Served: Students in kindergarten through grade 12; university students

For More Information

Website: mslc.rutgers.edu

Contact: Margie Eickhorst,
eickhors@rci.rutgers.edu

Program Administration

Busch Math and Science Learning Center
Allison Road Classroom Building, Third Floor
618 Allison Road
Piscataway, NJ 08854
732-445-3442



National Safety Council Defensive Driving Course

The National Safety Council Defensive Driving Course is approved by the New Jersey Motor Vehicle Commission and is open to any driver. The course, offered several times monthly, provides information about defensive driving and improving safety. Participants may receive an insurance discount and remove points from their driving record.

Area(s) Served: New Brunswick; New Jersey

Population(s) Served: Eligible drivers

Partner(s): National Safety Council; New Jersey Motor Vehicle Commission

For More Information

Website: rues.rutgers.edu/defense.shtml

Contact: Lieutenant Les Barta,
lbarta@aps.rutgers.edu

Program Administration

Department of Emergency Services
55 Commercial Avenue
New Brunswick, NJ 08901
732-932-4800

New Brunswick 4-H Club

The New Brunswick 4-H Club serves the needs of New Brunswick's Latino community. Programs include leadership opportunities, cultural arts and dance, arts and crafts, babysitting, sports and fitness, gardening, foods and nutrition, and English as a Second Language classes. Rutgers students serve as mentors and resource leaders for the club.

Area(s) Served: New Brunswick

Population(s) Served: New Brunswick youth

Partner(s): Center for Latin American Studies; Central Jersey Latino Chamber of Commerce; George Street Co-op; Greater Brunswick Charter School; Latino Leadership Alliance; Lazos America Unida; Magyar Bank, New Brunswick; Puerto Rican Action Board; Rutgers University Center for Latino Arts and Culture

For More Information

Website: nj4h.rutgers.edu/about

Contact: Karl McClean,
mcclean@njaes.rutgers.edu; Laura K. Bovitz,
bovitz@njaes.rutgers.edu

Program Administration

Cooperative Extension of Middlesex County
42 Riva Avenue, Davidson Mill Pond Park
North Brunswick, NJ 08902
732-398-5261

New Brunswick Community Farmers Market

The New Brunswick Community Farmers Market brings healthy food from local farms to families and households across the city. The organization's mission is to instill healthy eating habits by focusing on nutritional issues that plague the community and creating good eating habits. Open June through October.

Area(s) Served: New Brunswick

Population(s) Served: Residents

Partner(s): City of New Brunswick; Johnson & Johnson; Rutgers School of Environmental and Biological Sciences

For More Information

Website: nbcfarmersmarket.com

Contact: Jaymie Santiago,
nbcfm@aesop.rutgers.edu

Program Administration

New Jersey Agricultural Experiment Station
Cooperative Extension
88 Lipman Drive
New Brunswick, NJ 08901
848-932-3706

New Brunswick Saturday Scholars Academy

The New Brunswick Saturday Scholars Academy provides an opportunity for local high school juniors to enhance their understanding of mathematical and scientific concepts and applications, and to improve their writing and reading comprehension skills. The program is designed to strengthen problem-solving skills, abstract reasoning, critical thinking, and written and oral expression.

Area(s) Served: New Brunswick

Population(s) Served: Students in grade 11 attending New Brunswick High School or New Brunswick Health Sciences Technology High School

Partner(s): New Brunswick Public Schools

For More Information

Website: odasis.rutgers.edu/index.php/nb-saturday-scholars

Contact: Kamal Khan, khan@biology.rutgers.edu

Program Administration

Office for Diversity and Academic Success
in the Sciences (ODASIS)
School of Arts and Sciences
604 Allison Road
Piscataway, NJ 08854-8000
732-445-6878

New Jersey Childhood Obesity Study

This in-depth study illuminates childhood obesity in five New Jersey cities: New Brunswick, Camden, Newark, Trenton, and Vineland. The research provides comprehensive information on the weight status of the cities' public school children and identifies factors that contribute to their overweight and obesity to guide the design of interventions.

Area(s) Served: New Brunswick; Newark; Camden; Trenton; Vineland; New Jersey

Population(s) Served: Children; adults; communities

Partner(s): Robert Wood Johnson Foundation

For More Information

Website: www.cshp.rutgers.edu/childhoodobesity.htm

Contact: Michael Yedidia, myedidia@ifh.rutgers.edu

Program Administration

Center for State Health Policy
112 Paterson Street, Fifth Floor
New Brunswick, NJ 08901-1913
848-932-3105

New Jersey Supplemental Nutrition Assistance Program-Education (SNAP-Ed)

Formerly known as the Food Stamp program, SNAP-Ed is a program aimed at improving nutrition and increasing physical activity among eligible audiences. It provides practical, hands-on education regarding diets and nutritional welfare, managing food budgets, and other resources.

Area(s) Served: New Brunswick; Middlesex County; New Jersey

Population(s) Served: Families

Partner(s): U.S. Department of Agriculture

For More Information

Website: njsnap-ed.org

Contact: Debrah Palmer, dpalmer@njaes.rutgers.edu, 732-932-9853

Program Administration

New Jersey Agricultural Experiment Station
Cooperative Extension
88 Lipman Drive
New Brunswick, NJ 08901
732-932-9570



Budding young artists can spend a week immersed in painting, drawing, pastels, watercolors, sculpture, and more at the Zimmerli Art Museum Summer Art Camp (page 42) on the College Avenue Campus. In addition to stimulating workshops and classes, students also explore the museum's collections for artistic inspiration.

Northern New Jersey Junior Science and Humanities Symposium (JSHS)

JSJS is an annual research fair that celebrates high school students' investigations in science, engineering, and mathematics. Students compete for scholarships and recognition by presenting the results of their original research efforts before a panel of judges and an audience of their peers.

Area(s) Served: Northern New Jersey counties
Population(s) Served: Students in middle school through grade 12
Partner(s): Academy of Applied Science; U.S. Department of Defense

For More Information

Website: soe.rutgers.edu/jsjs
Contact: Jean Patrick Antoine,
j.antoine@rutgers.edu

Program Administration

School of Engineering
95 Brett Road
Room B-110
Piscataway, NJ 08854
732-445-2687, ext. 16

Nurture Through Nature

This summer program teaches third-, fourth-, and fifth-grade students the wonders of science. An outdoor learning area features a butterfly garden, organic vegetable garden, pond, and fountain. Offered three days per week during July and August, the program continues after school in September.

Area(s) Served: New Brunswick
Population(s) Served: Students in grades three through five
Partner(s): Johnson & Johnson; New Brunswick Public Schools; Rutgers Edward J. Bloustein School of Planning and Public Policy

For More Information

Contact: Michael Camasso,
mcamasso@rci.rutgers.edu;
Radha Jagannathan, radha@rci.rutgers.edu

Program Administration

Department of Agricultural, Food, and Resource Economics
School of Environmental and Biological Sciences
55 Dudley Road
New Brunswick, NJ 08901
732-932-9155

Nutritional Sciences Preschool

Three- and 4-year-old children in the Nutritional Sciences Preschool enjoy discovery learning and meaningful social interaction through developmentally appropriate activities. Cooking and nutrition education are emphasized in all classes. Research and evaluation projects related to childhood nutrition are an integral part of the school.

Area(s) Served: New Brunswick; surrounding communities
Population(s) Served: Preschool children

For More Information

Website: nutrition.rutgers.edu/presch
Contact: Harriet Worobey,
harrietw@rci.rutgers.edu

Program Administration

Department of Nutritional Sciences
School of Environmental and Biological Sciences
26 Nichol Avenue
New Brunswick, NJ 08901-2882
732-932-8895

Off-Campus Housing Service

The Rutgers Off-Campus Housing Service provides informational, legal, and local resources to assist landlords in New Brunswick, as well as their university tenants.

Area(s) Served: New Brunswick; surrounding communities

Population(s) Served: Community landlords; university tenants

For More Information

Website: ruoffcampus.rutgers.edu

Contact: ochscis@rci.rutgers.edu

Program Administration

Off-Campus Housing Service

96 Davidson Road

Piscataway, NJ 08854

732-445-5737



Osher Lifelong Learning Institute at Rutgers University (OLLI-RU)

OLLI-RU is designed for citizens 50 years of age and older who want to continue their learning experience and share knowledge with others. It is a noncompetitive, noncredit education that is stimulating, friendly, and informal. There are no tests or grades.

Area(s) Served: New Brunswick; Piscataway; New Jersey

Population(s) Served: Adults age 50 and older

Partner(s): Osher Foundation

For More Information

Website: olliru.rutgers.edu

Contact: olliru@docs.rutgers.edu

Program Administration

Division of Continuing Studies

178 Ryders Lane

New Brunswick, NJ 08901

732-932-7233, ext. 4201

Preschool Storytelling

The Jane Voorhees Zimmerli Art Museum offers Preschool Storytelling Days to community schools. Each session includes 30 minutes of storytelling by storyteller-in-residence Ellen Musikant, an age-appropriate museum tour, a drawing activity, and a musical art-hunt parade. Storytelling Days are arranged by appointment and are free of charge.

Area(s) Served: New Brunswick; surrounding communities; New Jersey

Population(s) Served: Preschool children

For More Information

Website: www.zimmerlimuseum.rutgers.edu/education

Contact: Zimmerli Education Department

Program Administration

Zimmerli Art Museum Education Department

71 Hamilton Street

New Brunswick, NJ 08901-1248

732-932-7237, ext. 615

Psychological Services Clinic

The Rutgers Psychological Services Clinic delivers psychotherapeutic services to the greater New Brunswick community provided by advanced doctoral students from the Rutgers Graduate School of Applied and Professional Psychology under the supervision of faculty and clinical supervisors.

Area(s) Served: New Brunswick; surrounding communities

Population(s) Served: Children; adults; couples

Partner(s): Division of Youth and Family Services; Middlesex County Division of Addiction Services

For More Information

Website: gsappweb.rutgers.edu/clinic/about.php

Contact: Dr. Donald Morgan, 732-445-6111, ext. 22

Program Administration

Psychological Services Clinic
152 Frelinghuysen Road
Piscataway, NJ 08854-8085
732-445-6111, option 4

Public Education Institute (PEI)

PEI hosts and cosponsors approximately 10 public forums yearly on important issues facing New Jersey public education. Roundtables feature presentations followed by discussion among participants, including educators and researchers, parents and policymakers, and administrators and business leaders.

Area(s) Served: New Brunswick; surrounding communities; New Jersey

Population(s) Served: Prekindergarten to grade 12 teachers, administrators, supervisors, and other specialists; students; parents; researchers

Partner(s): New Jersey Department of Education; statewide education business and philanthropic associations

For More Information

Website: cesp.rutgers.edu/PEI/PEI.htm

Contact: Liliana Snegur, lsnegur@rci.rutgers.edu

Program Administration

Center for Effective School Practices
80 Cortontail Lane, Suite 410
Somerset, NJ 08873
732-564-9100, ext. 13

QuarkNet

QuarkNet is an initiative to involve high school physics teachers and their students in state-of-the-art research into the structure of matter and the fundamental forces of nature. Rutgers faculty hold workshops for teachers and summer programs for students.

Area(s) Served: New Brunswick; New Jersey

Population(s) Served: High school teachers and students; physicists

Partner(s): National Science Foundation; Office of High Energy Physics and Office of Science at the U.S. Department of Energy

For More Information

Website: quarknet.fnal.gov

Contact: Stephen Schnetzer,
steves@physics.rutgers.edu

Program Administration

Department of Physics and Astronomy
School of Arts and Sciences
136 Frelinghuysen Road
Piscataway, NJ 08854
732-445-5500, ext. 5035

Ralph W. Voorhees Fellowship Program in Public Service

Each year, the Ralph W. Voorhees Fellowship Program in Public Service selects four undergraduate students to undertake internships with nonprofit or government organizations in areas such as community development and planning, community-based education, housing and public transportation, public health, and public policy.

Area(s) Served: New Brunswick; surrounding communities

Population(s) Served: Nonprofit and government organizations

For More Information

Website: policy.rutgers.edu/academics/undergrad/voorhees.php

Contact: voorheesfellowship@policy1.rutgers.edu; Professor Kathe Newman, knewman@rutgers.edu

Program Administration

Undergraduate Student Services
Edward J. Bloustein School of Planning and Public Policy
33 Livingston Avenue, Suite 100
New Brunswick, NJ 08901

Read Across New Jersey

Students share their love of reading through this videoconferencing project that pairs students in grades two through eight around New Jersey. Teachers register for technology support and to get a partner site in New Jersey to begin their collaborations. Classes can have either webcams or room-sized videoconferencing equipment to participate.

Area(s) Served: New Jersey

Population(s) Served: Students in grades two through eight

Partner(s): New Jersey students and teachers

For More Information

Website: cmsce.rutgers.edu

Contact: Judy Bornstein, jsborn@rci.rutgers.edu, 732-445-0670

Program Administration

Center for Mathematics, Science, and Computer Education
118 Frelinghuysen Road
Piscataway, NJ 08854
732-445-4850

Relay For Life (Rutgers University Chapter of Colleges Against Cancer)

Relay For Life, an event to fight cancer, is organized by Rutgers student volunteers and open to community participants. Teams take part in an overnight relay with at least one member of each team walking or running around a track throughout the night.

Area(s) Served: Local communities

Population(s) Served: Varies

Partner(s): American Cancer Society

For More Information

Website: eden.rutgers.edu/~rucac

Contact: rucac@eden.rutgers.edu

Program Administration

RU Colleges Against Cancer
H.O.P.E. House
8 Lafayette Street
New Brunswick, NJ 08901

RU Ready

RU Ready engages the students of New Brunswick High School in the political process. In addition to in-class workshops assisted by Rutgers student interns, RU Ready works with the elected student leaders of New Brunswick High School, training and mentoring them as they fulfill their duties as leaders.

Area(s) Served: New Brunswick

Population(s) Served: New Brunswick High School students

For More Information

Website: eagleton.rutgers.edu/programs/ruready

Contact: Elizabeth C. Matto,
ematto@rci.rutgers.edu

Program Administration

Eagleton Institute of Politics
191 Ryders Lane
New Brunswick, NJ 08901-8557
732-932-9384

RU STRONG Service Days

The RU STRONG (Rutgers University Student-Athletes Total Resource Opportunities for Necessary Growth) program helps student-athletes build life skills by participating in community service at local organizations such as Elijah's Promise Soup Kitchen, Salvation Army of New Brunswick, Read Across America, and a toy/book drive.

Area(s) Served: New Brunswick; surrounding communities

Population(s) Served: Students in grades K–12; families in need

Partner(s): Elijah's Promise; New Brunswick Public Schools; Salvation Army of New Brunswick

For More Information

Website: scarletknights.com/rustrong/index.asp

Contact: Kendrick Gholston,
kgholston@scarletknights.com

Program Administration

Athletics Compliance
83 Rockefeller Road
Piscataway, NJ 08854
732-445-7864

Rutgers Advanced Technology Extension (RATE)

RATE, the continuing education arm of the Rutgers School of Engineering, provides current professional and continuing education to meet the lifelong learning needs of scientists and engineers. RATE's mission is to transfer advanced research from the laboratory to the marketplace.

Area(s) Served: New Brunswick; surrounding communities; New Jersey

Population(s) Served: Engineers; scientists

Partner(s): Division of Continuing Studies

For More Information

Website: rate.rutgers.edu

Contact: Stephen Carter, scarter@jove.rutgers.edu

Program Administration

School of Engineering
CoRE Building, Room 703
96 Frelinghuysen Road
Piscataway, NJ 08854
732-445-4700 or 732-921-8294



Local residents can enjoy healthy, affordable, and farm-fresh fruits, vegetables, and artisan prepared items such as honey and preserves at the New Brunswick Community Farmers Market (page 21). Located at 178 Jones Avenue in New Brunswick, the market is open on Thursdays 11 a.m. to 3 p.m. and Saturdays 11 a.m. to 5 p.m. from June through October.

Rutgers Against Hunger (RAH)

RAH works to increase awareness of hunger, encourage activism and service to tackle hunger, stimulate research to assist those in need, and provide immediate relief through food drives and other events to raise money and collect food.

Area(s) Served: New Jersey

Population(s) Served: Individuals suffering from hunger, including children, families, and senior citizens

Partner(s): Johnson & Johnson; New Jersey Federation of Food Banks

For More Information

Website: rah.rutgers.edu

Contact: Kat Decker,
kdecker@oldqueens.rutgers.edu

Program Administration

Office of the Secretary
7 College Avenue
New Brunswick, NJ 08901
848-932-7434

Rutgers Astrophysics Summer Institute

Each summer, outstanding high school students and their physics teachers are invited to learn how to conduct research in X-ray astrophysics. The institute works to improve science education through teacher and student involvement in basic research, and challenges teachers to learn methods that can be applied in their classes.

Area(s) Served: New Brunswick; Piscataway; New Jersey

Population(s) Served: High school students who have completed a physics course; physics teachers
Partner(s): NASA; Rutgers Graduate School of Education; Smithsonian Astrophysical Observatory

For More Information

Website: xray.rutgers.edu/asi/asi_general.html

Contact: James Coleman,
jcoleman@physics.rutgers.edu;
Terry Matilsky, matilsky@physics.rutgers.edu;
Eugenia Etkina, eugenia.etkina@gse.rutgers.edu

Program Administration

Department of Physics and Astronomy
School of Arts and Sciences
136 Frelinghuysen Road
Piscataway, NJ 08854
732-445-5500

Rutgers Collegiate 4-H Club

The Rutgers Collegiate 4-H Club provides its members with a sense of identity on campus, enriches their lives through group projects and recreation, and develops confidence and leadership skills. The club provides service and support to its local and state 4-H programs, as well as to communities near Rutgers.

Area(s) Served: New Brunswick; Middlesex County

Population(s) Served: Youth; the public

For More Information

Website: nj4h.rutgers.edu/about/ruc4hc

Contact: Macy Compton,
mcompton@njaes.rutgers.edu;
nj4h@rce.rutgers.edu

Program Administration

Department of 4-H Youth Development
New Jersey Agricultural Experiment
Station Cooperative Extension
88 Lipman Drive
New Brunswick, NJ 08901-8525
732-932-5000, ext. 596

Rutgers Day

Rutgers Day is an all-day celebration showcasing Rutgers' research and service to New Jersey. With free performances, tours, exhibits, hands-on activities, demonstrations, and more, Rutgers Day expands on the long-standing success of Ag Field Day and the New Jersey Folk Festival, encompassing programs across campuses in New Brunswick and Piscataway.

Area(s) Served: New Brunswick; Piscataway; surrounding communities; Middlesex County; New Jersey

Population(s) Served: New Jersey residents

For More Information

Website: rutgersday.rutgers.edu

Contact: rutgersday@rutgers.edu

Program Administration

Office of Community Affairs
Department of University Relations
101 Somerset Street
New Brunswick, NJ
08901-1281
732-932-7824



Rutgers Early College Humanities (REaCH) Program

REaCH provides high school students from low-income communities with the ability to take college-level, credit-granting courses in a variety of humanities disciplines. Rutgers grants a certificate of achievement to students completing the courses, and offers 4 to 6 college credits or high school credit for successful participation in the course.

Area(s) Served: New Brunswick; surrounding communities; New Jersey

Population(s) Served: High school students

Partner(s): New Brunswick Public Schools; community-based organizations; local school districts

For More Information

Website: reach.rutgers.edu

Contact: Martin Kempner,
mkempner@sas.rutgers.edu, 732-297-9214

Program Administration

Office of the Vice Dean of Undergraduate
Education
35 College Avenue
New Brunswick, NJ 08901
732-932-8433

Rutgers Future Scholars

The Rutgers Future Scholars program seeks to increase the number of academically promising students from Rutgers' host communities, including New Brunswick, who go on to college. Participants are identified before the eighth grade. Those who successfully complete the five-year preparatory program will attend Rutgers tuition-free.

Area(s) Served: New Brunswick; Piscataway; Newark; Camden

Population(s) Served: High school students in New Brunswick, Piscataway, Newark, and Camden

Partner(s): AT&T; Diversity Inc; Fred J. Brotherton Charitable Foundation; Fund for New Jersey; The Geraldine R. Dodge Foundation; Merck; National Grid; Susquehanna Bank; TD Bank; Xerox Foundation

For More Information

Website: futurescholars.rutgers.edu

Contact: Aramis Gutierrez,
aramis.gutierrez@rutgers.edu

Program Administration

Rutgers Future Scholars
191 College Avenue, 202B
New Brunswick, NJ 08901
732-932-6712

Rutgers Gardens Children's Programs

Rutgers Gardens Children's Programs—including after-school and camp programs and guided and self-guided tours—enable children to explore and discover the garden environment.

Area(s) Served: New Brunswick; Piscataway; New Jersey

Population(s) Served: Children

Partner(s): Middlesex Regional Educational Services Commission; New Brunswick Public Schools; Newark Public Schools

For More Information

Website: rutgersgardens.rutgers.edu/childrensprogram.htm

Contact: Mary Ann Schrum,
schrum@aesop.rutgers.edu

Program Administration

Rutgers Gardens
112 Ryders Lane
New Brunswick, NJ 08901
732-932-8451

Rutgers Gardens Farmers Market

Rutgers University and Rutgers Gardens help support local farmers, as well as the local community and economy, by utilizing an area at the entrance to the gardens, adjacent to Ryders Lane, as a market. The market promotes sustainable farming and focuses on recycling and conservation.

Area(s) Served: New Brunswick; Piscataway; surrounding communities; New Jersey

Population(s) Served: General public

For More Information

Website: rutgersgardens.rutgers.edu/farmmarket.htm

Contact: Mary Ann Schrum,
schrum@aesop.rutgers.edu

Program Administration

Rutgers Gardens
112 Ryders Lane
New Brunswick, NJ 08901
732-932-8451

Rutgers Gardens Tours

Tours can be scheduled Monday through Friday, mornings or afternoons, and Saturday mornings. Tours are approximately one hour in length and include a general tour of the garden, unless prior arrangements have been agreed upon. Rain or shine. Adults: \$12 weekends, \$10 weekdays. Children: \$5.

Area(s) Served: New Brunswick; Piscataway; surrounding communities; New Jersey

Population(s) Served: Students; families; master gardeners; garden clubs

For More Information

Website: rutgersgardens.rutgers.edu/tours.html

Contact: Nancy Herbert,
herbert@aesop.rutgers.edu

Program Administration

Rutgers Gardens
112 Ryders Lane
New Brunswick, NJ 08901
732-932-8451

Rutgers Gardens Volunteer Program

Rutgers Gardens offers volunteers an opportunity to become a part of the gardens' mission to educate both students and the general public. Volunteers help in all areas from planting the display garden to working in the greenhouses, as well as assisting at annual events.

Area(s) Served: New Brunswick; Piscataway; surrounding communities; New Jersey

Population(s) Served: High school students; corporations; local residents

Partner(s): Deloitte; Eagle Scouts; General Electric; Johnson & Johnson; L'Oreal; Starbucks

For More Information

Website: rutgersgardens.rutgers.edu/volunteering.html

Contact: MaryAnne Mcmillan,
mcmillan@aesop.rutgers.edu

Program Administration

Rutgers Gardens
112 Ryders Lane
New Brunswick, NJ 08901
732-932-8451

Rutgers Geology Museum

The Rutgers Geology Museum provides unique learning experiences to enhance understanding of the natural world through exhibits, collections, public lectures, tours, special activity days, an annual open house, and mineral sale. The museum is free and open to the public.

Area(s) Served: New Brunswick; surrounding communities; New Jersey

Population(s) Served: All

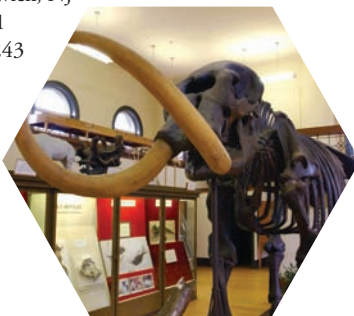
For More Information

Website: geologymuseum.rutgers.edu

Contact: Lauren Adamo, lneitzke@rci.rutgers.edu

Program Administration

Rutgers Geology Museum
85 Somerset Street
New Brunswick, NJ
08901-1281
732-932-7243



Rutgers Green Purchasing Program

The Green Purchasing Program conducts research leading to the development and implementation of environmentally and socially responsible procurement at Rutgers and globally. Research includes product R&D, life-cycle, alternative and sustainable materials, procurement software enhancement, and waste and recycling. On- and off-campus consultancy services include procurement, research, teaching/training, and green contract development.

Area(s) Served: New Brunswick; Piscataway; New Jersey

Population(s) Served: All

Partner(s): City of New Brunswick; Duke Farms; Middlesex County Freeholders; Rutgers Center for Sustainable Materials; Rutgers Energy Institute

For More Information

Website: greenpurchasing.rutgers.edu

Contact: Kevin Lyons, klyons@rci.rutgers.edu

Program Administration

Purchasing Department
3 Rutgers Plaza, 2nd Floor
New Brunswick, NJ 08901-8559
732-932-4370

Rutgers Infant Nutrition and Growth Project

This project studies infants from low-income, minority families. Infants are assessed from 3 months through 5 years of age. The program follows infant weight gain, activity levels, overfeeding, and mothers' perceptions of temperament and infant fussiness in order to better understand the factors promoting overweight in early childhood.

Area(s) Served: New Brunswick; surrounding communities; New Jersey

Population(s) Served: Families with young children

Partner(s): National Institutes of Health

For More Information

Website: magazine.rutgers.edu/features/spring-2010/tipping-the-scales

Contact: John Worobey, worobey@rci.rutgers.edu

Program Administration

Department of Nutritional Sciences
School of Environmental and Biological Sciences
26 Nichol Avenue
New Brunswick, NJ 08901
732-932-6517

Rutgers Science Explorer

Rutgers Science Explorer is a state-of-the-art mobile laboratory contained within a 40-foot custom-designed bus that travels to schools in New Jersey. Rutgers scientists work with students in experiments to explore and experience the excitement of the life, earth, and physical sciences.

Area(s) Served: New Brunswick; New Jersey

Population(s) Served: Students in grades five through 12

Partner(s): Edison Venture Fund; Glaxo Smith-Kline; Wyeth

For More Information

Website: sciencebus.rutgers.edu

Contact: Aly Busse, scibus@rci.rutgers.edu

Program Administration

Busch Math and Science Learning Center
Allison Road Classroom Building, Third Floor
618 Allison Road
Piscataway, NJ 08854
732-445-3442

Rutgers Senior Day

This annual event provides guests from various local senior centers a day of fun with Rutgers students. Each guest is encouraged to participate in activities including arts and crafts, swimming, wellness programs, games, exercise, and dance. Lunch is provided.

Area(s) Served: New Brunswick; Piscataway; surrounding communities; Middlesex County

Population(s) Served: Local senior citizens

Partner(s): Department of Exercise Science

For More Information

Website: recreation.rutgers.edu

Contact: Paul S. Fischbach,
fischbach@aesop.rutgers.edu

Program Administration

Department of Recreation
656 Bartholomew Road
Piscataway, NJ 08901
732-445-0462



Rutgers Office of Student Life provides many student community service opportunities (page 39). For example, students engage in volunteer work such as shelving books at a local library, helping with landscaping at a YMCA, and assisting at a day care.

Rutgers Speakers Bureau

The Rutgers Speakers Bureau is comprised of faculty and staff interested in sharing their knowledge and expertise with various organizations as a service to New Jersey. Professional, community, and civic organizations are welcome to request a Rutgers speaker.

Area(s) Served: New Brunswick; Piscataway; surrounding communities; Middlesex County; New Jersey

Population(s) Served: New Jersey organizations

For More Information

Website: ur.rutgers.edu/speakers

Contact: Arlana Arrington,
aarrington@ur.rutgers.edu;
speakers@ur.rutgers.edu; 732-932-7823, option 2

Program Administration

Office of Community Affairs
Department of University Relations
101 Somerset Street
New Brunswick, NJ 08901-1281
732-932-7824

Rutgers Summer Scholars Program

This program allows ambitious and high-achieving high school freshmen, sophomores, or juniors to take introductory-level college courses at the Rutgers–New Brunswick Campus during the summer to prepare for college, explore a major, or even earn credits. Scholarships are available.

Area(s) Served: New Brunswick; Piscataway; surrounding communities; Middlesex County; New Jersey

Population(s) Served: High school freshmen, sophomores, and juniors with a minimum cumulative grade-point average of 3.0

For More Information

Website: summer.rutgers.edu/highschool

Contact: Jennifer Valera,
jenvallera@docs.rutgers.edu, 732-932-6869

Program Administration

Office of Summer and Winter Sessions
55 Commercial Avenue, Room 120
New Brunswick, NJ 08901
732-932-7565

Rutgers University in Your Community Girl Scout Program Award

This program helps young women learn more about the possibilities that await them in the world of higher education and at Rutgers. Participants leave the program with an understanding of Rutgers' diverse student body, academic landscape, on- and off-campus activities, outreach efforts, research, and history.

Area(s) Served: New Brunswick; Piscataway; surrounding communities; Middlesex County; New Jersey

Population(s) Served: Cadette-, Senior-, and Ambassador-level Girl Scouts

Partner(s): Girl Scouts of Central & Southern NJ, Inc.

For More Information

Website: ur.rutgers.edu/girlscouts

Contact: Melissa Kvidahl,
mkvidahl@ur.rutgers.edu

Program Administration

Office of Community Affairs
Department of University Relations
101 Somerset Street
New Brunswick, NJ 08901-1281
732-932-7824

Rutgers University Summer Acting Conservatory

The Rutgers University Summer Acting Conservatory is a four-week program for high school students and offers intensive, professional actor training within the context of a college environment. The daily classes, which include acting, movement, and voice/speech, are taught by working theater professionals.

Area(s) Served: New Brunswick; surrounding communities; New Jersey

Population(s) Served: High school students

Partner(s): Geraldine R. Dodge Foundation

For More Information

Website: masongross.rutgers.edu/extension-division/summer-theater-conservatory

Contact: Marshall Jones III

Program Administration

Mason Gross School of the Arts

2 Chapel Drive

New Brunswick, NJ

08901

732-932-9891,

ext. 25



Rutgers Upward Bound

The Rutgers Upward Bound precollege program assists and motivates students to graduate from high school, prepare for college admission, and complete their baccalaureate degree. This year-round project offers an on-campus summer institute, SAT and HSPA preparation, cultural activities, college tours, college planning, and more.

Area(s) Served: New Brunswick; surrounding communities; New Jersey

Population(s) Served: High school students in grades nine through 12

Partner(s): New Brunswick, Perth Amboy, and Plainfield Public Schools

For More Information

Website: upwardbound.rutgers.edu

Contact: James Whitney, jhwiii@echo.rutgers.edu

Program Administration

Office of Undergraduate Education

Instructional Support

Lucy Stone Hall

54 Joyce Kilmer Avenue

Piscataway, NJ 08854

732-445-3090

Safety and Traffic Education Program (STEP)

STEP, a free cooperative program, provides demonstrations to children in prekindergarten through third grade on bicycle and helmet safety, the crossing of intersections with or without traffic signals, and the meaning of common traffic signs. Printed materials are provided to reinforce travel safety.

Area(s) Served: New Brunswick; surrounding communities; New Jersey

Population(s) Served: Children in prekindergarten through grade three

Partner(s): New Jersey Department of Transportation

For More Information

Website: cait.rutgers.edu/tsrc

Contact: Janet Hansen, jchansen@rutgers.edu

Program Administration

Transportation Safety Resource Center

Center for Advanced Infrastructure and

Transportation

100 Brett Road

Piscataway, NJ 08854-8954

732-445-0579, ext. 146

Scarlet Day of Service

Scarlet Day of Service takes place early in the fall semester, matching over 450 student volunteers to over 25 different community partner sites.

Area(s) Served: New Brunswick; Piscataway; surrounding communities; New Jersey

Population(s) Served: Local community

For More Information

Contact: Matthew S. Zielinski,
mattzie@rci.rutgers.edu

Program Administration

Student Affairs
Federation Hall, 4 Jones Avenue
New Brunswick, NJ 08901
732-932-4075

Senior Citizen Audit Program

Senior citizens, age 62 or older, can attend courses on a space-available, noncredit basis, during the fall and spring semesters with special permission from the professor. There are no tuition costs for auditing courses.

Area(s) Served: New Brunswick; Piscataway; surrounding communities; Middlesex County; New Jersey

Population(s) Served: Senior citizens, age 62 or older

For More Information

Website: ur.rutgers.edu/community/senior.shtml

Contact: Kay Schechter, kays@ur.rutgers.edu

Program Administration

Office of Community Affairs
Department of University Relations
101 Somerset Street
New Brunswick, NJ 08901-1281
732-932-7824

Special Friends Day

This annual event provides special needs youth a day of fun with Rutgers students. Each participant has two friends escorting him or her throughout the day. Activities include arts and crafts, games, food and beverages, access to the pool facility, and take-home items. Registration is limited to 100 participants.

Area(s) Served: New Brunswick; surrounding communities

Population(s) Served: Special needs youths ages 6 to 21

Partner(s): Douglass Developmental Disabilities Center

For More Information

Website: recreation.rutgers.edu/content/special_friends_day.asp

Contact: Paul Fischbach,
fischbach@aesop.rutgers.edu; Sue Beaudrow,
sfd@aesop.rutgers.edu

Program Administration

Department of Recreation
50 Biel Road
New Brunswick, NJ 08901
732-932-9178



Student Community Service Opportunities

Rutgers offers a variety of community service initiatives, enabling students to develop a sense of social responsibility while giving back to the local community. Past events include river cleanup, holiday gift wrapping, Census 2010 information gathering, and craft making for children at the Robert Wood Johnson medical center.

Area(s) Served: New Brunswick; surrounding communities

Population(s) Served: Varies

Partner(s): Elijah's Promise; Enable; F.E. Parker Memorial Home; First Reformed Church; Making It Possible to End Homelessness; New Brunswick Public Library; NJ Tree Foundation; Pine Grove Day Nursery; Raritan Valley YMCA; Tiny Tot Spots; Youth Empowerment Services

For More Information

Website: getinvolved.rutgers.edu/programs-and-events/community-service

Contact: Karen Ardizzone, kardizzo@rci.rutgers.edu

Program Administration

Office of Student Life
613 George Street
New Brunswick, NJ 08901

Sustainable Raritan River Initiative

The Sustainable Raritan River Initiative, led by faculty and students at Rutgers' Edward J. Bloustein School of Planning and Public Policy and the School of Environmental and Biological Sciences, enlists the cooperation of public- and private-sector stakeholders in the Raritan River Basin to foster environmentally sound stewardship.

Area(s) Served: New Brunswick; areas along the Raritan River

Population(s) Served: All

Partner(s): National Oceanic and Atmospheric Administration; New Jersey Audubon Society; New Jersey Department of Environmental Protection; NY/NJ Baykeeper; Raritan River Collaborative; Rutgers School of Environmental and Biological Sciences; Sustainable Raritan River Business Round Table; U.S. Environmental Protection Agency

For More Information

Website: ruweb.rutgers.edu/raritan

Contact: Judy Shaw, judy.shaw@rutgers.edu

Program Administration

National Center for Neighborhood and Brownfields Redevelopment, Edward J. Bloustein School of Planning and Public Policy
33 Livingston Avenue
New Brunswick, NJ 08901
732-932-5475

Teacher Workshops in Arts Education

The Zimmerli Art Museum arts education workshops provide teachers with a multidisciplinary approach to teaching art and ways to use the visual arts to enhance other academic skills such as writing.

Area(s) Served: New Brunswick; surrounding communities; New Jersey

Population(s) Served: Teachers

Partner(s): New Jersey Department of Education

For More Information

Website: www.zimmerlimuseum.rutgers.edu/education

Contact: Zimmerli Education Department

Program Administration

Zimmerli Art Museum Education Department
71 Hamilton Street
New Brunswick, NJ 08901
732-932-7237, ext. 615

Teach Europe

The Center for European Studies provides workshops for high school teachers of languages, social studies, and art to study the European Union and its multicultural nature, economy, global role, and relations with the United States.

Area(s) Served: New Brunswick; surrounding communities; New Jersey

Population(s) Served: Teachers

Partner(s): American Association of Teachers of German; Delegation of the European Union to the United States; Rutgers Language Institute; many European consular and cultural offices in New York

For More Information

Website: europe.rutgers.edu

Contact: european@rci.rutgers.edu

Program Administration

Center for European Studies
102 Nichol Avenue
New Brunswick, NJ 08901
732-932-8551

Tutoring Plus

Tutoring Plus provides academic and enrichment services to partner schools in New Brunswick. Rutgers students work as tutors in classrooms, after-school arenas, and in one-on-one sessions.

Area(s) Served: New Brunswick

Population(s) Served: Children in kindergarten through grade 12

Partner(s): Future Scholars Program; New Brunswick Public Library; New Brunswick Public Schools

For More Information

Website: tutoringplus.gse.rutgers.edu

Contact: Lorraine McCune,
mccune@rci.rutgers.edu

Program Administration

Graduate School of Education
10 Seminary Place, Room 311
New Brunswick, NJ 08901
732-932-7496, ext. 8336

Tutoring Programs in Literacy and Math

The Literacy and Math Tutoring Programs were established to ensure that all children become successful readers. To further this effort, Rutgers provides opportunities for federal work-study students to serve as reading tutors to students in prekindergarten through ninth grade.

Area(s) Served: New Brunswick

Population(s) Served: Students through grade nine

Partner(s): Future Scholars Program; New Brunswick Public Library; New Brunswick Public Schools

For More Information

Websites: studentwork.rutgers.edu/tutor/litandmath.htm; Work Study Opportunities for Tutoring: studentwork.rutgers.edu/new/comservagencies.htm

Contact: Cynthia Meekins,
cmeekins@rci.rutgers.edu; off-campus employers can contact Joyce Madee, madee@rci.rutgers.edu, 732-932-8817, ext. 652

Program Administration

Student Employment Office
620 George Street
New Brunswick, NJ 08901
732-932-8817

12th-Grade College English

This program offers New Brunswick high school seniors college-level English courses taught by Rutgers professors. Students who complete “Basic Composition” with a grade of C or better receive 3 college credits and may be recommended to continue in the spring with “Expository Writing” (English 101) for an additional 3 college credits.

Area(s) Served: New Brunswick

Population(s) Served: Students in grade 12 attending New Brunswick High School or New Brunswick Health Sciences Technology High School

Partner(s): New Brunswick Public Schools

For More Information

Website: odasis.rutgers.edu/index.php/12th-grade-college-c

Contact: Dr. Kamal Khan,
khan@biology.rutgers.edu

Program Administration

Office for Diversity and Academic Success
in the Sciences
604 Allison Road
Piscataway, NJ 08854-8000
732-445-6878

Waksman Student Scholars Program

This yearlong program enables students to take part in a challenging research investigation. Basic concepts and relevant themes in molecular biology are explored in conjunction with a strong laboratory component. Throughout a summer institute and during the academic year, emphasis is placed on bioinformatics, computational biology, and electronic communications.

Area(s) Served: New Brunswick; surrounding communities; New Jersey

Population(s) Served: High school students

For More Information

Website: avery.rutgers.edu/WSSP/WSSP10-11/index.php

Contact: Susan Coletta,
coletta@waksman.rutgers.edu

Program Administration

Waksman Institute of Microbiology
190 Frelinghuysen Road
Piscataway, NJ 08854-8020
732-445-3531

Zimmerli Art Museum Studio Z: The Adi Blum Learning Center

Open to the public during regular museum hours, Studio Z: The Adi Blum Learning Center is the perfect place for families to learn about the Zimmerli's diverse collections with self-guided activities for the whole family to enjoy, including the center's interactive computer terminal.

Area(s) Served: New Brunswick; surrounding communities; New Jersey

Population(s) Served: Children; adults; families; school groups

Partner(s): New Jersey Department of Education

For More Information

Website: www.zimmerlimuseum.rutgers.edu/education

Contact: Zimmerli Education Department

Program Administration

Zimmerli Art Museum Education Department
71 Hamilton Street
New Brunswick, NJ 08901
732-932-7237, ext. 615



Zimmerli Art Museum Summer Art Camp

Both veteran and newcomer budding art students can benefit from this summer camp for children. Classes include painting, drawing, pastels, watercolors, sculpture, and an art “sampler” class. Children also will spend time during the weeklong camp finding inspiration in the museum’s collections as they explore the galleries.

Area(s) Served: New Brunswick; surrounding communities; New Jersey

Population(s) Served: Children ages 7 to 14

For More Information

Website: www.zimmerlimuseum.rutgers.edu/education

Contact: Zimmerli Education Department

Program Administration

Zimmerli Art Museum Education Department
71 Hamilton Street
New Brunswick, NJ 08901
732-932-7237, ext. 615

Zimmerli Art Museum Tours

With thousands of original artworks, educator-led discovery tours, an elegant museum shop, and convenient café, the Zimmerli is an ideal destination. Tours should be scheduled at least two weeks in advance. School groups, \$1 per student; teachers and chaperones, free. Adult groups, \$10 per person. Seniors, \$9.

Area(s) Served: New Brunswick; surrounding communities; New Jersey

Population(s) Served: Children; adults; families; school groups

Partner(s): New Jersey Department of Education

For More Information

Website: www.zimmerlimuseum.rutgers.edu/education

Contact: Zimmerli Education Department

Program Administration

Zimmerli Art Museum Education Department
71 Hamilton Street
New Brunswick, NJ 08901
732-932-7237, ext. 615

Program Index by Interest Area



Agriculture and Environment

Marigold Project.....	20
New Brunswick Community Farmers Market ..	21
Nurture Through Nature.....	24
Rutgers Collegiate 4-H Club	30
Rutgers Gardens Children’s Programs	32
Rutgers Gardens Tours.....	32
Rutgers Gardens Volunteer Program	33
Rutgers Green Purchasing Program	33
Sustainable Raritan River Initiative.....	39

Camps and Youth Programs

The Academy at Rutgers for Girls in Engineering and Technology (TARGET)	8
The Academy for Leadership and Equity (TALE)	8
Career Summer Institute (CSI)	12
Governor’s School of Engineering and Technology.....	18

Healing Through the Arts Summer Camp	18
Mason Gross School of the Arts Extension Division	20
New Brunswick 4-H Club.....	21
Northern New Jersey Junior Science and Humanities Symposium (JSHS)	24
Nurture Through Nature	24
Read Across New Jersey	27
Rutgers Astrophysics Summer Institute.....	30
Rutgers Collegiate 4-H Club	30
Rutgers Gardens Children’s Programs	32
Rutgers Summer Scholars Program	36
Rutgers University in Your Community Girl Scout Program Award	36
Rutgers University Summer Acting Conservatory	37
Special Friends Day	38
Waksman Student Scholars Program.....	41
Zimmerli Art Museum Summer Art Camp.....	42

Community Education

Annual Safety Forum.....	10
Cardiopulmonary Resuscitation (CPR) and First Aid Training.....	12
Center for Effective School Practices (CESP)	12
Confucius Institute at Rutgers University (CIRU)	14
Expanded Food and Nutrition Education Program (EFNEP).....	15
Get Moving–Get Healthy New Jersey.....	16
Getting to Know Europe: Business Forums	16
HiGene: A Genome Sequencing Project for High Schools.....	19
Mason Gross School of the Arts Extension Division	20
National Safety Council Defensive Driving Course.....	21
New Jersey Supplemental Nutrition Assistance Program-Education (SNAP-Ed)	22
Osher Lifelong Learning Institute at Rutgers University (OLLI-RU)	25
Public Education Institute (PEI).....	26
QuarkNet.....	26
Rutgers Advanced Technology Extension (RATE)	28
Rutgers Astrophysics Summer Institute.....	30

Rutgers Speakers Bureau.....	36
Rutgers University in Your Community Girl Scout Program Award.....	36
Senior Citizen Audit Program.....	38
Teacher Workshops in Arts Education	39
Teach Europe.....	40
Zimmerli Art Museum Studio Z: The Adi Blum Learning Center	41

Culture, Arts, and Entertainment

Confucius Institute at Rutgers University (CIRU)	14
Day of the Dead Program.....	14
Healing Through the Arts Summer Camp	18
Marigold Project.....	20
New Brunswick 4-H Club.....	21
Rutgers Day.....	31
Rutgers University Summer Acting Conservatory	37
Teacher Workshops in Arts Education	39
Zimmerli Art Museum Studio Z: The Adi Blum Learning Center	41

Events: Join Us

Big Chill 5K Run/Walk (Charity Toy Drive)	11
--	----

Big Pink Volleyball	11
Day of the Dead Program.....	14
Getting to Know Europe: Business Forums	16
Halloween Monster Mash.....	18
New Brunswick Community Farmers Market ...	21
Preschool Storytelling	25
Relay For Life (Rutgers University Chapter of Colleges Against Cancer)	27
Rutgers Day.....	31
Rutgers Gardens Farmers Market.....	32
Rutgers Geology Museum	33
Rutgers Senior Day.....	34
Zimmerli Art Museum Tours.....	42

Nutrition and Wellness

Ask Before You Eat (Food Allergy Awareness Campaign)	10
Expanded Food and Nutrition Education Program (EFNEP).....	15
Get Moving–Get Healthy New Jersey.....	16
New Brunswick Community Farmers Market ...	21
New Jersey Childhood Obesity Study.....	22
New Jersey Supplemental Nutrition Assistance Program-Education (SNAP-Ed)	22
Nutritional Sciences Preschool.....	24

Rutgers Against Hunger (RAH).....	30
Rutgers Gardens Farmers Market.....	32
Rutgers Infant Nutrition and Growth Project.....	34

Partnerships With Business, Government, and Community

Civic Engagement and Service Education	
Partnerships (CESEP) Program	13
Community Policing Program	14
Department of Transportation Services (DOTS)	
.....	15
Getting to Know Europe: Business Forums	16
Healing Through the Arts Summer Camp	18
Institute for Families (IFF)	19
Law Enforcement Training Facility	19
New Brunswick 4-H Club.....	21
New Brunswick Community Farmers Market	21
Off-Campus Housing Service	25
Ralph W. Voorhees Fellowship Program in Public Service.....	27
Rutgers Green Purchasing Program	33
Rutgers Speakers Bureau.....	36
Sustainable Raritan River Initiative.....	39

Prekindergarten to Grade 12

The Academy at Rutgers for Girls in Engineering and Technology (TARGET)	8
The Academy for Leadership and Equity (TALE)	8
Advancement Via Individual Determination (AVID).....	10
Bridge to Employment (BTE)	11
Career Summer Institute (CSI)	12
Center for Effective School Practices (CESP).....	12
Douglass Project: Fourth Grade Science Stars	15
Getting to Know Europe: Euro Challenge	16
Governor's School of Engineering and Technology.....	18
HiGene: A Genome Sequencing Project for High Schools.....	19
Math and Science Learning Center (MSLC).....	20
New Brunswick Saturday Scholars Academy.....	22
Northern New Jersey Junior Science and Humanities Symposium (JSHS)	24
Nurture Through Nature.....	24
Nutritional Sciences Preschool.....	24
Preschool Storytelling	25
Public Education Institute (PEI).....	26
QuarkNet.....	26

Read Across New Jersey	27
RU Ready.....	28
Rutgers Astrophysics Summer Institute.....	30
Rutgers Early College Humanities (REaCH) Program	31
Rutgers Future Scholars	31
Rutgers Gardens Children's Programs	32
Rutgers Science Explorer	34
Rutgers Summer Scholars Program	36
Rutgers University in Your Community Girl Scout Program Award.....	36
Rutgers Upward Bound	37
Safety and Traffic Education Program (STEP)	37
Tutoring Plus.....	40
Tutoring Programs in Literacy and Math	40
12th-Grade College English.....	41
Waksman Student Scholars Program.....	41
Zimmerli Art Museum Summer Art Camp	42

Public Health and Safety

Annual Safety Forum.....	10
Cardiopulmonary Resuscitation (CPR) and First Aid Training.....	12
Child Seat Inspection Station	13
Community Policing Program	14

Department of Transportation Services (DOTS)15

Institute for Families (IFF)19

Law Enforcement Training Facility19

National Safety Council Defensive Driving Course.....21

Psychological Services Clinic.....26

Safety and Traffic Education Program (STEP) ...37

Service Opportunities

Big Chill 5K Run/Walk (Charity Toy Drive)11

Big Pink Volleyball11

Halloween Monster Mash.....18

Relay For Life (Rutgers University Chapter of Colleges Against Cancer)27

RU STRONG Service Days28

Rutgers Against Hunger (RAH)30

Rutgers Collegiate 4-H Club30

Rutgers Gardens Volunteer Program33

Scarlet Day of Service38

Special Friends Day38

Student Community Service Opportunities.....39

Sustainable Raritan River Initiative.....39

Tutoring Plus.....40

Tutoring Programs in Literacy and Math40



Program Index A–Z

A

The Academy at Rutgers for Girls in Engineering and Technology (TARGET).....	8
The Academy for Leadership and Equity (TALE)	8
Advancement Via Individual Determination (AVID)	10
Annual Safety Forum	10
Ask Before You Eat (Food Allergy Awareness Campaign).....	10

B

Big Chill 5K Run/Walk (Charity Toy Drive).....	11
Big Pink Volleyball.....	11
Bridge to Employment (BTE).....	11

C

Cardiopulmonary Resuscitation (CPR) and First Aid Training.....	12
Career Summer Institute (CSI)	12
Center for Effective School Practices (CESP)	12
Child Seat Inspection Station.....	13
Civic Engagement and Service Education Partnerships (CESEP) Program.....	13

Community Policing Program	14
Confucius Institute at Rutgers University (CIRU)	14

D

Day of the Dead Program	14
Department of Transportation Services (DOTS)	15
Douglass Project: Fourth Grade Science Stars....	15

E

Expanded Food and Nutrition Education Program (EFNEP)	15
---	----

G

Get Moving–Get Healthy New Jersey	16
Getting to Know Europe: Business Forums.....	16
Getting to Know Europe: Euro Challenge.....	16
Governor’s School of Engineering and Technology	18

H

Halloween Monster Mash	18
Healing Through the Arts Summer Camp	18

HiGene: A Genome Sequencing Project for High Schools	19
--	----

I

Institute for Families (IFF)	19
------------------------------------	----

L

Law Enforcement Training Facility.....	19
--	----

M

Marigold Project	20
Mason Gross School of the Arts Extension Division.....	20
Math and Science Learning Center (MSLC)	20

N

National Safety Council Defensive Driving Course	21
New Brunswick 4-H Club	21
New Brunswick Community Farmers Market...21	
New Brunswick Saturday Scholars Academy	22
New Jersey Childhood Obesity Study	22
New Jersey Supplemental Nutrition Assistance Program-Education (SNAP-Ed).....	22

Northern New Jersey Junior Science and Humanities Symposium (JSHS)	24
Nurture Through Nature	24
Nutritional Sciences Preschool	24

O

Off-Campus Housing Service	25
Osher Lifelong Learning Institute at Rutgers University (OLLI-RU)	25

P

Preschool Storytelling.....	25
Psychological Services Clinic.....	26
Public Education Institute (PEI)	26

Q

QuarkNet	26
----------------	----

R

Ralph W. Voorhees Fellowship Program in Public Service	27
Read Across New Jersey	27
Relay For Life (Rutgers University Chapter of Colleges Against Cancer)	27
RU Ready	28
RU STRONG Service Days.....	28
Rutgers Advanced Technology Extension (RATE)	28

Rutgers Against Hunger (RAH)	30
Rutgers Astrophysics Summer Institute.....	30
Rutgers Collegiate 4-H Club.....	30
Rutgers Day	31
Rutgers Early College Humanities (REaCH) Program.....	31
Rutgers Future Scholars	31
Rutgers Gardens Children's Programs.....	32
Rutgers Gardens Farmers Market	32
Rutgers Gardens Tours.....	32
Rutgers Gardens Volunteer Program	33
Rutgers Geology Museum.....	33
Rutgers Green Purchasing Program	33
Rutgers Infant Nutrition and Growth Project ...	34
Rutgers Science Explorer.....	34
Rutgers Senior Day	34
Rutgers Speakers Bureau	36
Rutgers Summer Scholars Program	36
Rutgers University in Your Community Girl Scout Program Award	36
Rutgers University Summer Acting Conservatory	37
Rutgers Upward Bound	37

S

Safety and Traffic Education Program (STEP)...	37
Scarlet Day of Service	38
Senior Citizen Audit Program	38
Special Friends Day.....	38
Student Community Service Opportunities	39
Sustainable Raritan River Initiative	39

T

Teacher Workshops in Arts Education.....	39
Teach Europe	40
Tutoring Plus	40
Tutoring Programs in Literacy and Math	40
12th-Grade College English.....	41

W

Waksman Student Scholars Program	41
--	----

Z

Zimmerli Art Museum Studio Z: The Adi Blum Learning Center.....	41
Zimmerli Art Museum Summer Art Camp	42
Zimmerli Art Museum Tours	42

Policy Prohibiting Discrimination and Harassment

Rutgers University policy prohibits discrimination and harassment in its operations and programs based upon the categories enumerated in its Policy Prohibiting Discrimination and Harassment, which can be viewed at <http://policies.rutgers.edu/PDF/Section60/60.1.12-current.pdf>.

Published in fall 2011.

Principal photography: Roy Groething, McKay Imaging Photography, and Nick Romanenko

Supplemental photography: Alan Goldsmith, Don Hamerman, Mason Gross School of the Arts, Michael Paras, and Patti Sapone

RU-1011-0236/16M



Mixed Sources

Product group from well-managed
forests and other controlled sources

www.fsc.org Cert no. SW-COC-001812
© 1996 Forest Stewardship Council



Office of Community Affairs
Department of University Relations
Rutgers, The State University of New Jersey
101 Somerset Street
New Brunswick, NJ 08901
732-932-7824
communityprograms.rutgers.edu